



SCHEMATIC DIAGRAMS FOR MODELS TX-32PS1, TX-28PS1 (EURO-10 CHASSIS)



IMPORTANT SAFETY NOTICE

Components identified by  mark have special characteristics important for safety. When replacing any of these components, use only manufacturers' specified parts.


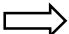
NOTE

1. RESISTOR
All resistors are carbon 1/4W resistor, unless marked otherwise.
Unit of resistance is OHM (Ω) (k=1,000, M=1,000,000)
2. CAPACITORS
All capacitors are ceramic 50V unless marked otherwise.
Unit of capacitance is μ F unless otherwise stated.
3. COIL
Unit of inductance is μ H, unless otherwise stated.

4. TEST POINT
 Test Point Position

5. EARTH SYMBOL
 Chassis Earth (Cold)
 Line Earth (Hot)

6. VOLTAGE MEASUREMENT
Voltage is measured by a d.c. voltmeter.
Measurement conditions are as follows:
Power source a.c. 220V-240V, 50Hz
Receiving Signal Colour Bar signal (RF)
All customer controls Maximum position

7.
 Indicates the Video signal path
 Indicates the Audio signal path

These schematic diagrams are the latest at time of printing and are subject to change without notice.

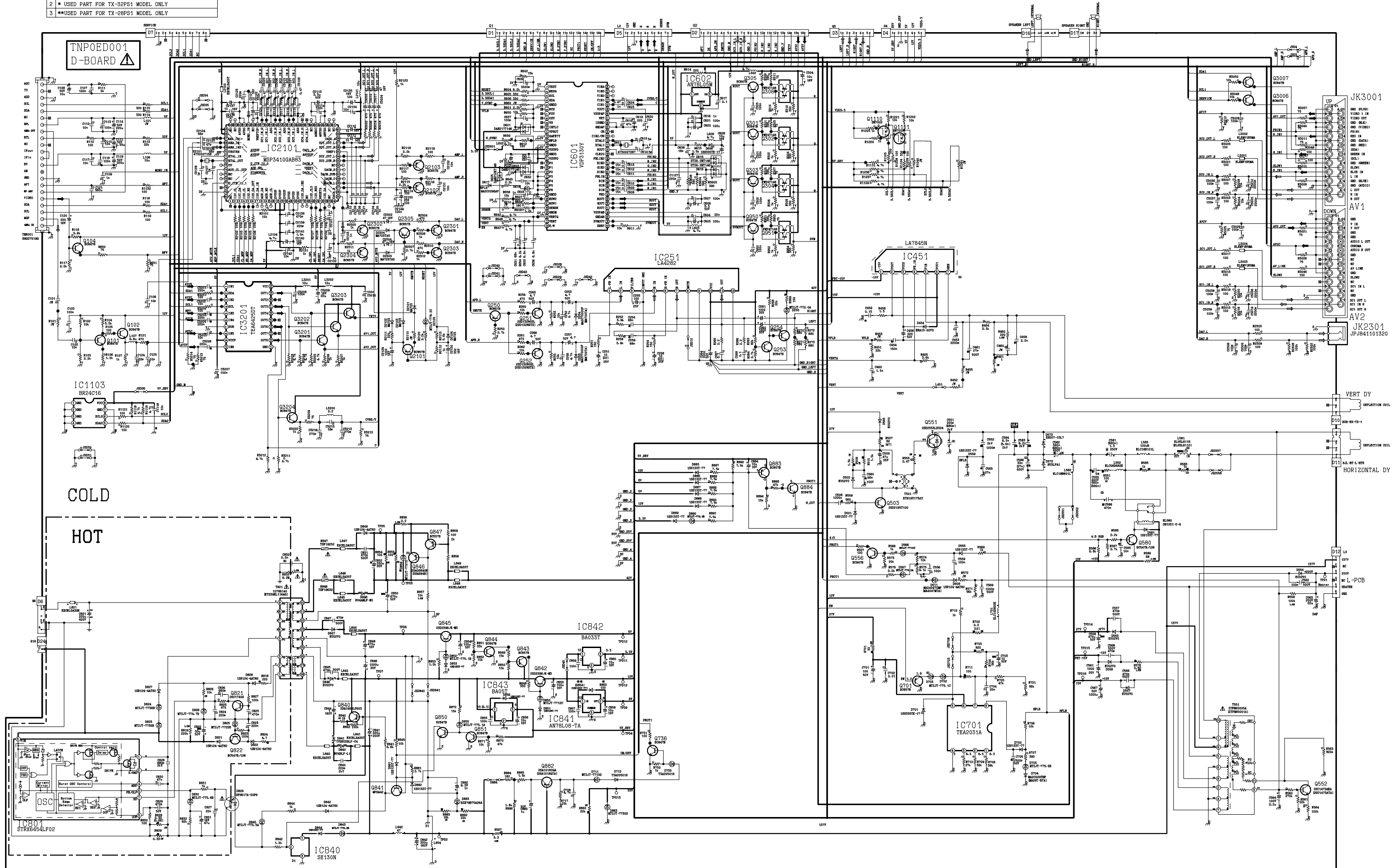
REMARKS

- a. Do not touch the hot part, or the hot and cold parts at the same time, as you are liable to a shock hazard.
- b. Do not short circuit the hot and cold circuits as electrical components may be damaged.
- c. Do not connect an instrument, such as an oscilloscope, to the hot and cold circuits simultaneously as this may cause fuse failure. Connect the earth of the instruments to the earth connection of the circuit being measured.
- d. Make sure to disconnect the power plug before removing the chassis.

NOTE

1. The Power Supply Circuit contains a circuit area, which uses a separate power supply to isolate the earth connection. The circuit is defined by HOT and COLD indications in the schematic diagram. All circuits, except the Power Circuit, are COLD.

- NOTE
- 1 THE VALUES IN BRACKETS [] REFER TO TX-28P51 MODEL.
 - 2 * USED PART FOR TX-32P51 MODEL ONLY.
 - 3 **USED PART FOR TX-28P51 MODEL ONLY.



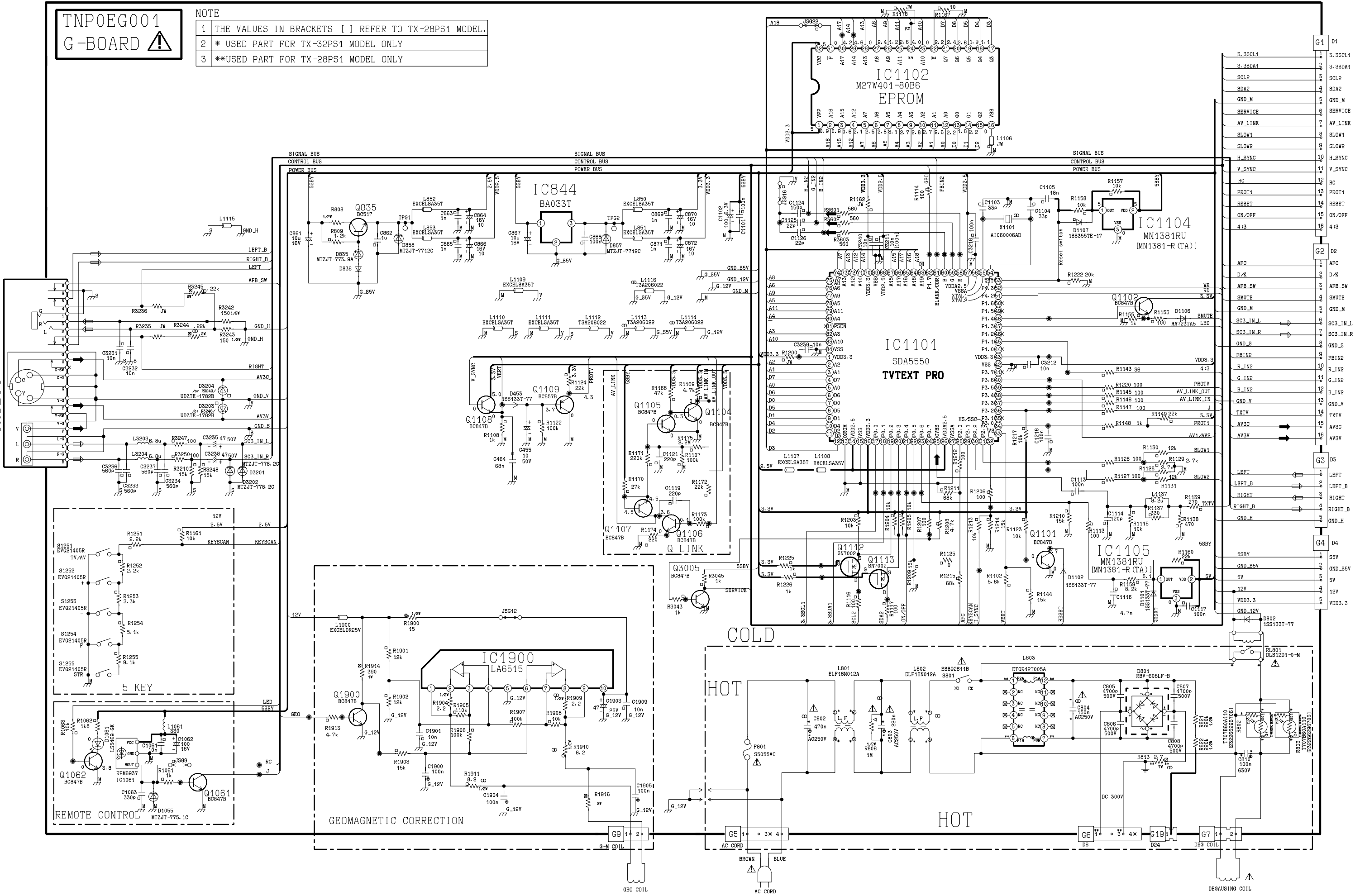
TNPOEG001
G-BOARD

NOTE

- 1 THE VALUES IN BRACKETS [] REFER TO TX-28PS1 MODEL.
- 2 * USED PART FOR TX-32PS1 MODEL ONLY
- 3 **USED PART FOR TX-28PS1 MODEL ONLY

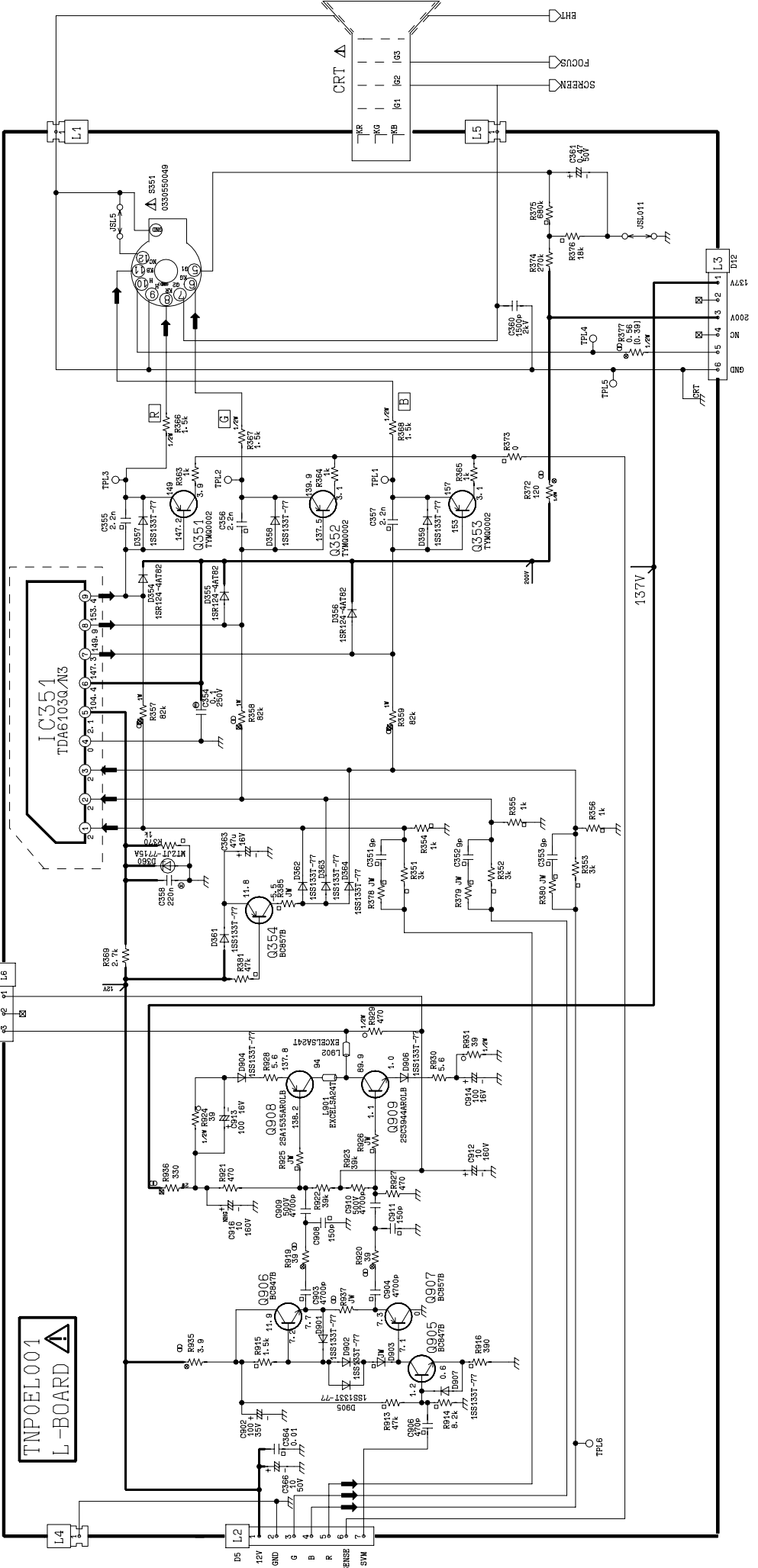
JK3201

TJBBE026



NOTE

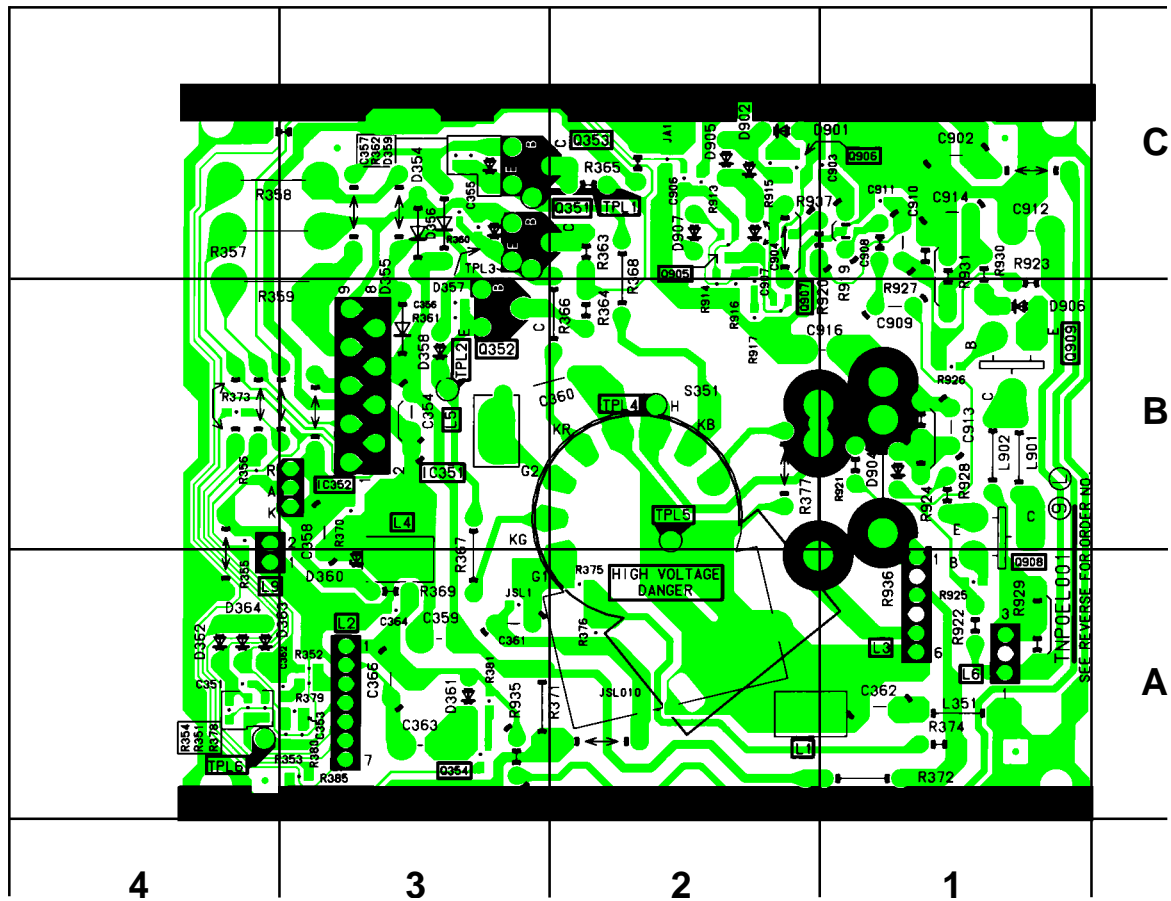
1 THE VALUES IN BRACKETS [] REFER TO TX-28PS1 MODEL.



CONDUCTOR VIEWS FOR MODELS TX-32PS1, TX-28PS1

L-BOARD TNP0EL001

TRAN'S	DIODE	D363	A4	IC'S			
Q351	C3	D354	C3	D364	A4	IC351	B3
Q352	B3	D355	B3	D901	C2		
Q353	C3	D356	C3	D902	C2	TP'S	
Q354	A3	D357	C3	D904	B1	TPL1	C2
Q905	C2	D358	B3	D905	C2	TPL2	B3
Q906	C2	D359	C3	D906	B1	TPL3	C3
Q907	B2	D360	A3	D907	C2	TPL4	B2
Q908	B1	D361	A3			TPL5	B2
Q909	B1	D362	A4			TPL6	A4



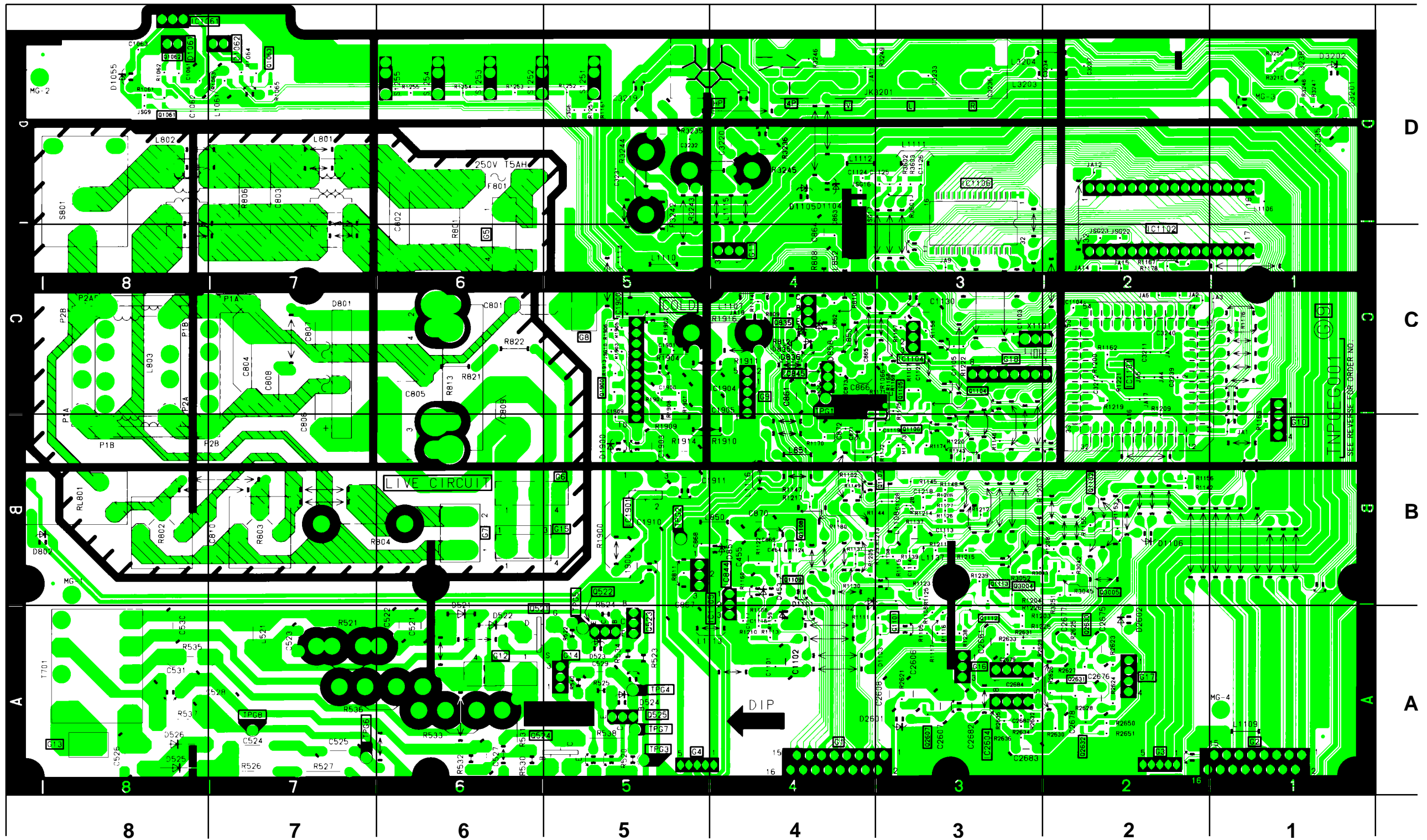
G-BOARD TNP0EG001

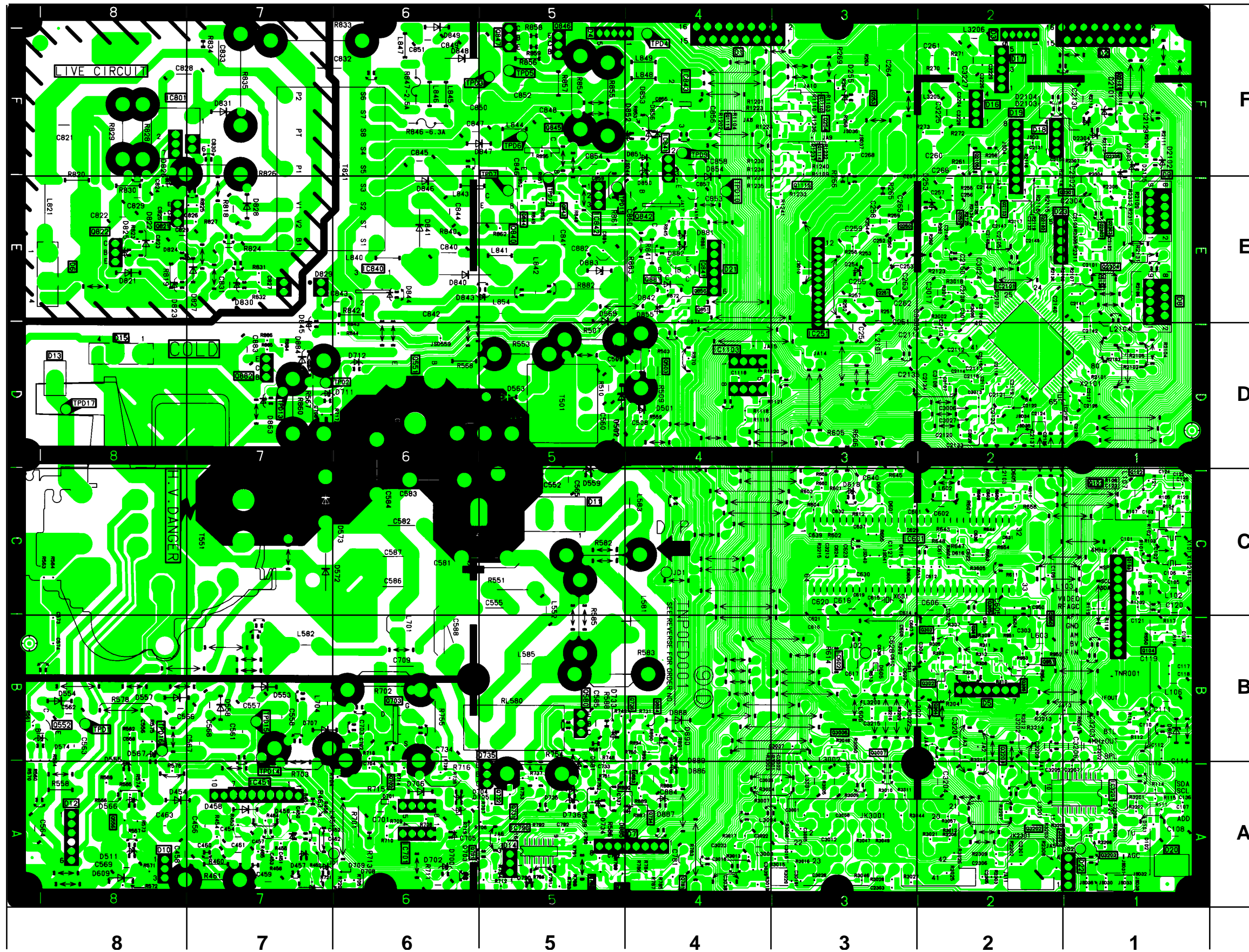
TRAN'S	
Q1061	D8
Q1062	D8
Q1101	A3
Q1102	B2
Q1104	C3
Q1105	C3
Q1106	B3
Q1107	B4
Q1108	B4
Q1109	B4
Q1112	A3
Q1113	B3
Q1900	C5
Q3005	B2
Q835	C4

DIODES	
D1055	D8
D1061	D8
D1101	B4
D1102	A4
D1106	B2
D3201	D1
D3202	D1
D453	B4
D801	C7
D802	B8
D835	C4
D836	C4
D857	B4
D858	C4

IC'S	
IC1061	D8
IC1101	C2
IC1102	D2
IC1104	C3
IC1105	B4
IC1900	C5
IC844	B5

TP'S	
TPG1	C4
TPG2	B5
TPG3	A5
TPG4	A5
TPG5	A5
TPG6	A7
TPG7	A5
TPG8	A7





TRAN'S	DIODES	D844	E6		
Q101	C1	D2101	F1	D845	D7
Q102	C1	D2102	F1	D846	E6
Q104	B1	D2103	F1	D847	F6
Q1110	F3	D2104	F1	D848	F6
Q1111	F4	D2105	F1	D849	F6
Q2101	F1	D2303	F1	D850	F4
Q2102	E2	D2304	F1	D851	F4
Q2103	E2	D253	E2	D852	F4
Q2301	E1	D254	E3	D853	F4
Q2302	E1	D255	F3	D854	F4
Q2303	E1	D454	A8	D855	E4
Q2304	E1	D501	D4	D856	F4
Q2305	F1	D502	D5	D863	D7
Q250	E3	D511	A8	D881	E4
Q251	E3	D553	B7	D882	E4
Q252	E2	D554	B8	D883	E5
Q253	F3	D555	A8	D885	A4
Q254	F3	D557	B8	D886	A4
Q3006	B3	D558	B7	D887	A4
Q3007	B3	D559	C5	D888	B4
Q301	B2	D565	E5	D889	B4
Q302	B2	D566	A8	D890	B4
Q303	B2	D567	B8		
Q304	B2	D572	C7		IC'S
Q305	C2	D573	C7	IC1103	D4
Q306	B2	D581	A5	IC2101	D2
Q3201	A2	D601	C3	IC251	E3
Q3202	A2	D603	C3	IC3201	A1
Q3203	A1	D605	C2	IC451	A7
Q3204	B2	D606	B3	IC601	C3
Q503	D4	D609	A8	IC602	B3
Q551	D6	D615	C3	IC701	A6
Q552	B8	D616	C2	IC801	F8
Q556	A8	D618	C3	IC840	E6
Q580	B5	D700	A6	IC841	F4
Q701	A6	D701	A6	IC842	E5
Q736	B4	D702	A6	IC843	F4
Q821	E8	D704	A6		TP'S
Q822	E8	D705	A6	TPD1	B8
Q840	E5	D711	D7	TPD2	D7
Q841	E4	D821	E8	TPD3	F5
Q842	E4	D822	E8	TPD4	F4
Q843	E5	D823	E8	TPD5	F5
Q844	E5	D824	E8	TPD6	F5
Q845	F5	D825	E8	TPD7	E5
Q846	F5	D826	E8	TPD9	F4
Q847	F5	D827	E7	TPD10	E4
Q850	E4	D828	E7	TPD11	E5
Q851	E4	D829	E7	TPD12	E5
Q882	D7	D830	E7	TPD13	D7
Q883	A4	D840	E6	TPD14	B7
Q884	B4	D841	E6	TPD15	B7
Q950	B2	D842	E4	TPD16	B8
Q951	B2	D843	E6	TPD17	D8

NOTES

A large rectangular area with horizontal dashed lines for writing notes. The lines are evenly spaced and extend across the width of the page.